



**Unique Low Mass Sintering Accessories for
MIM and CIM Applications**

Presented By : David P. Hamling
ZIRCAR Ceramics, Inc.

MIM 2019

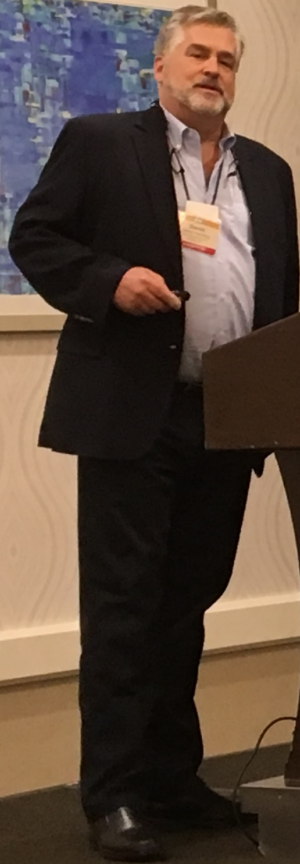
Lake Buena Vista, FL



Unique Low Mass Sintering Accessories for
MIM and CIM Applications

Presented By : David P. Hamling
ZIRCAR Ceramics, Inc.

MIM 2019
Lake Buena Vista, FL



History

- 100 N. Main Street, Florida, New York 10921 USA
- Successor in Interest to ZIRCAR Products, Inc.
- ZPI Founded 1974 by Bernie Hamling
- ZIRCAR Ceramics, Inc., Incorporated June 2000
- Current Owners: David Hamling and Phil Hamling



Assets - Sales - Employees

Manufacturing:

Original ZIRCAR
Products, Inc. Factory

Recently Expanded to
30,000 sq.ft.

Recent Acquisition of
20,000 sq.ft factory space
- BMR

Recent 10,000 sq.ft
expansion - BMR

Admin:

Original “150 year old
Victorian Mansion” Offices.

Warehouse: 6000 sq. ft.

Tool Shop: 1500 sq.ft.

Total Area = 75,000 sq. ft.

Sales: USD 10 Million

Employees: 50 Full-Time









**Zircar**[®]
CERAMICS



Knowledge Through Experience

- Executive Management –
75+ Man Years Combined Experience.
- Department Managers & Supervisors
10+ years Individual Experience



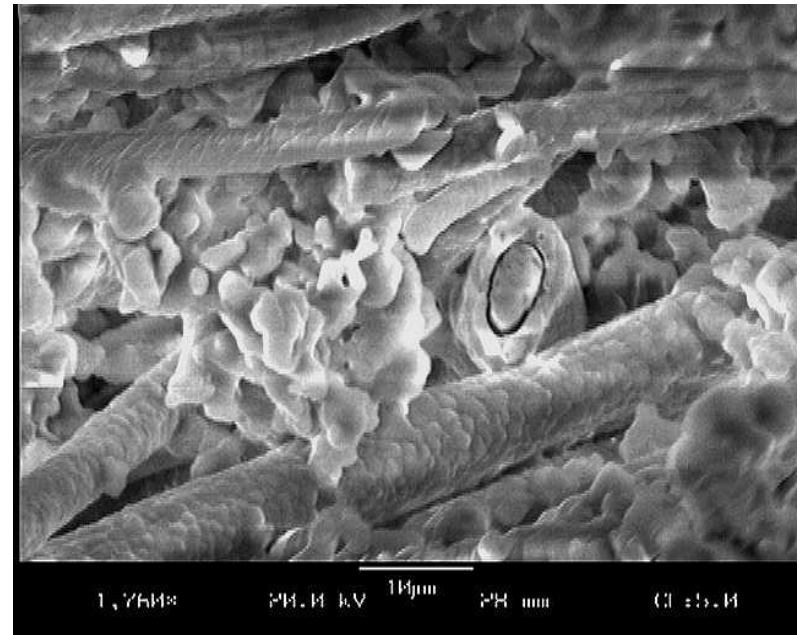
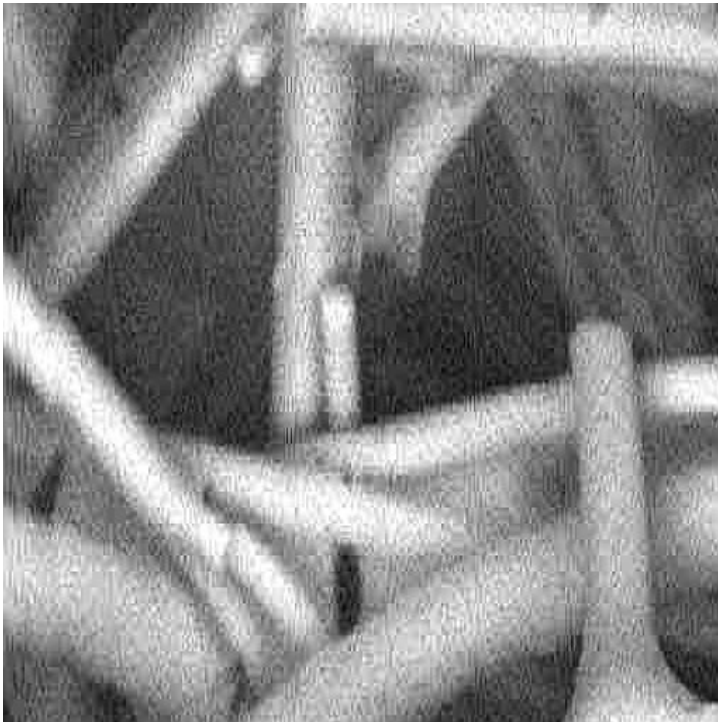
It's a family affair!

- In 2011 the third generation of the Hamling family joined the company.
- **Phil B Hamling** - Key Account / OEM Sales
- **Cole Hamling** - Production Manager



Products

- Wide range of application solutions based upon high temperature ceramic fiber technology
- High temperature stability & refractoriness
- Possible through the properly engineered combination of raw materials



Top Markets Served

- Injection-Molded Metal and Ceramic Powders
MIM / CIM
- Electro / Technical Ceramics
- Secondary Aluminum - Sheet and Die Casting
- Electro-Mechanical Devices
- Gov't & Corp. R&D
- OEM Rapid-Cycle Furnace Builders
- OEM Analytical Device Manufacturer
- Sputtering Target Makers
- High-Temperature Fuel Cells
- Oxide Crystal Growers
- Fiber Optic Fiber Producers
- Many More!!!!!!



Composition Al₂O₃ / SiO₂	Fiber Type ***	Binder System	Continuous Operating Temp. C
80% / 20%	ALBF	SiO ₂	1700 to 1825
85% / 15%	ALBF	SiO ₂	1650
59% / 41%	ASBF	SiO ₂	1420
35% / 65%	ASBF	SiO ₂	1260

Composition Al₂O₃ / SiO₂	Fiber Type ***	Binder System	Continuous Operating Temp. C
98.4% / 1.6%	ALBF	Al ₂ O ₃	1700
97% / 3%	ALBF	Al ₂ O ₃	1600
68% / 32%	ASBF	Al ₂ O ₃	1063

***ALBF = Polycrystalline Alumina, 96% Al₂O₃ 4% SiO₂, > 50% Alpha Al₂O₃

***ASBF = Vitreous Alumina Silica, 50% Al₂O₃ 50% SiO₂



Rigid Products

Standard Boards:

Densities: 0.26 to 0.80 g/cc

(16 - 50 pcf)

Sizes: Thickness:

6 - 100 mm

(1/8 to 4 in.)

Width x Length:

305 x 457 L to 610 x
1220mm

(12 x 18 to 24 x 48 in.)



www.zircarceramics.com



Flexible Products

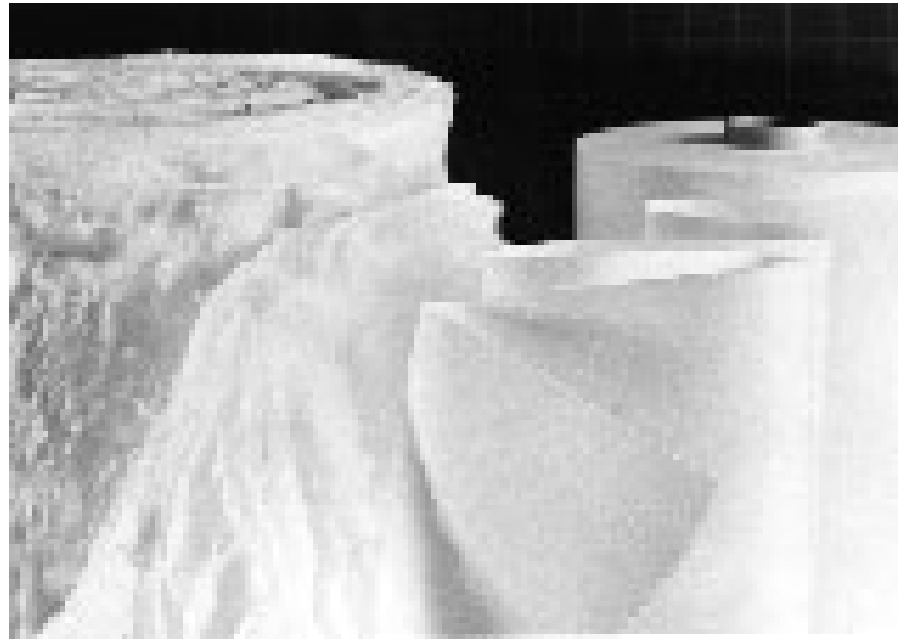
Al₂O₃ Blanket & Papers

- 1650°C Max Temp.
- Al₂O₃ - SiO₂ Blanket

Papers & Textiles

- 1260°C Max Temp.

Die cut firing separators

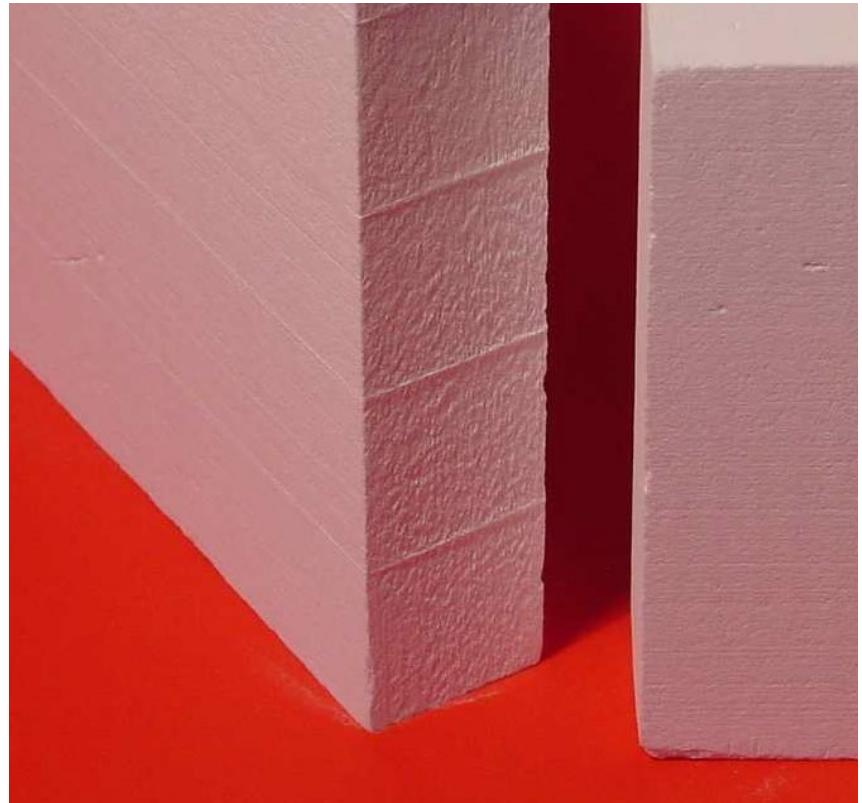


Cements & Rigidizers

High Temperature Bonding & Hardening Agents

Compositions:

- 99+% Al_2O_3
- $\text{Al}_2\text{O}_3 - \text{SiO}_2$
- SiO_2



MIM Applications

Typical Applications:

- Sagger veneers
- Boat liners
- Firing Setters
- Sintering Fixtures
- Thermal Insulation In H₂ Atmosphere Furnaces with temperatures as high as 1700°C

Challenges:

- Flatness Requirements
- Complex part topographies
- Drag induced distortion
- Contamination issues
- Effective Thermal Insulation

ZAL-45AA

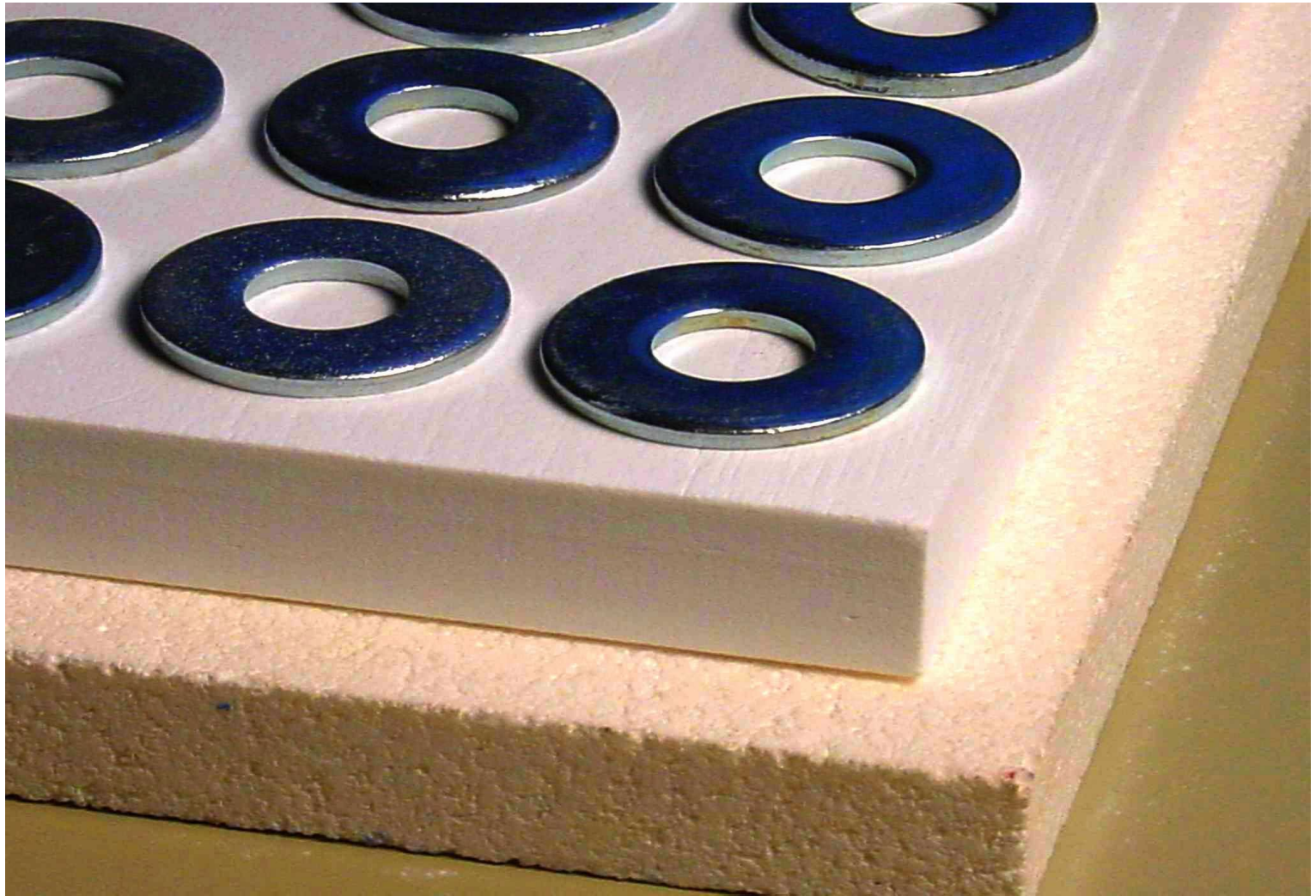
Product Features

- High Purity Al₂O₃
- 70% Open Porosity
- Colloidal Al₂O₃ particles
- Low Mass
- **Superior Machinability & Re-machinability!**

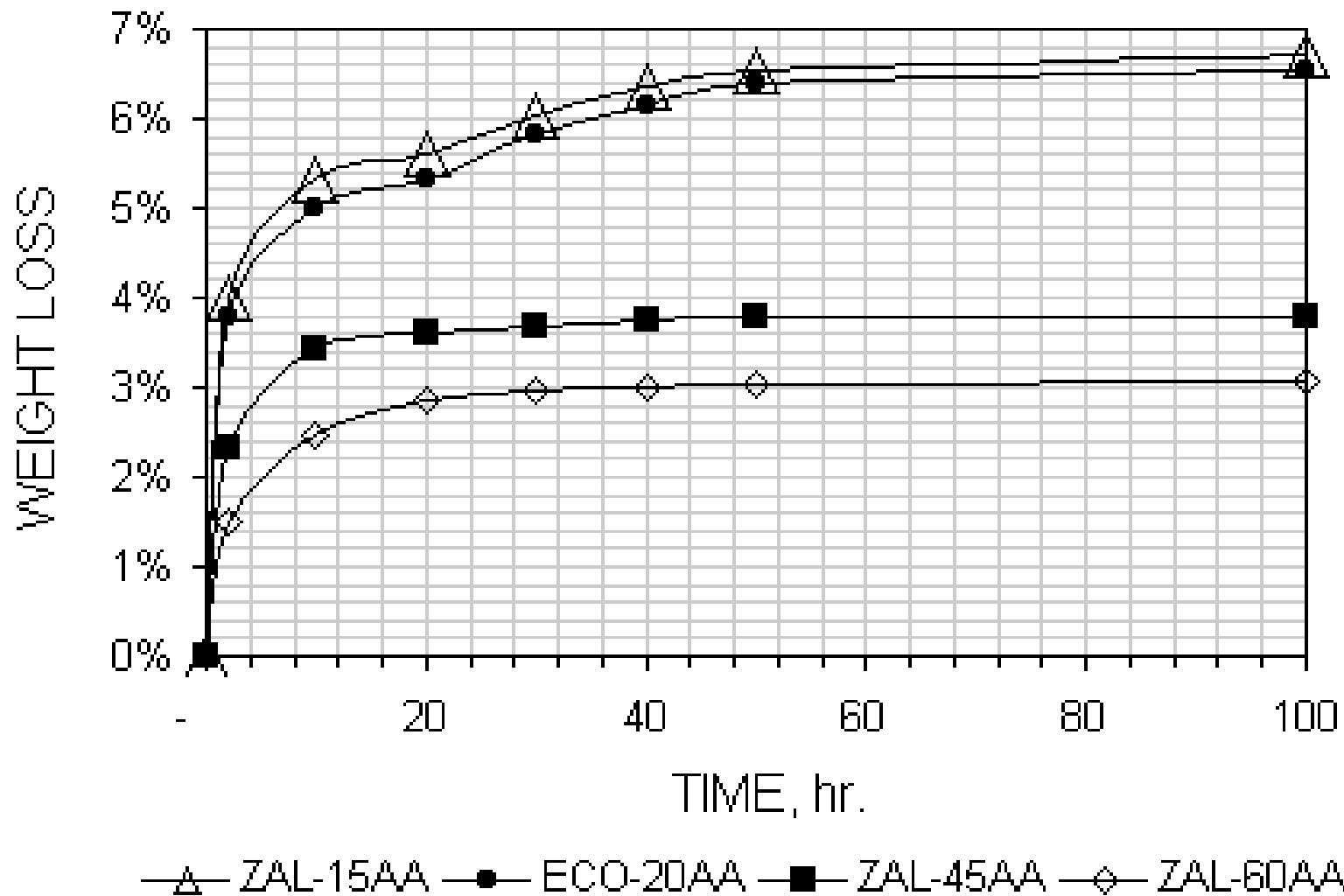
Benefits

- Stable in Sintering Atmospheres H₂ / vacuum
- Enables Production Of High-Density Parts
 - complete binder burnout
 - full sintering
- Low Distortion Of Complex Parts – no sticking
- Eliminates Cross Contamination

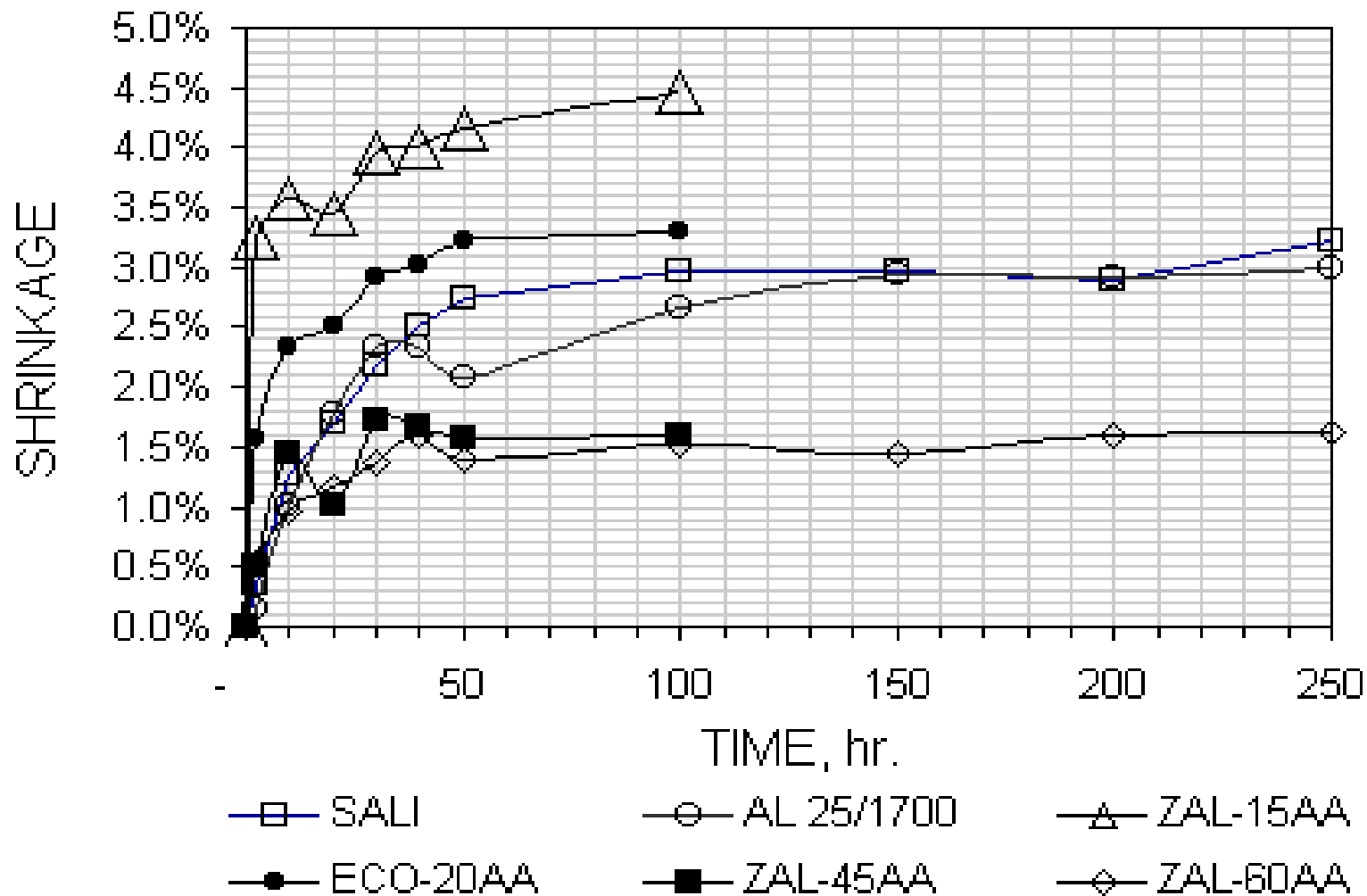




WEIGHT LOSS vs TIME at 1450°C in HYDROGEN



LENGTH and WIDTH SHRINKAGE vs TIME at 1450°C in HYDROGEN

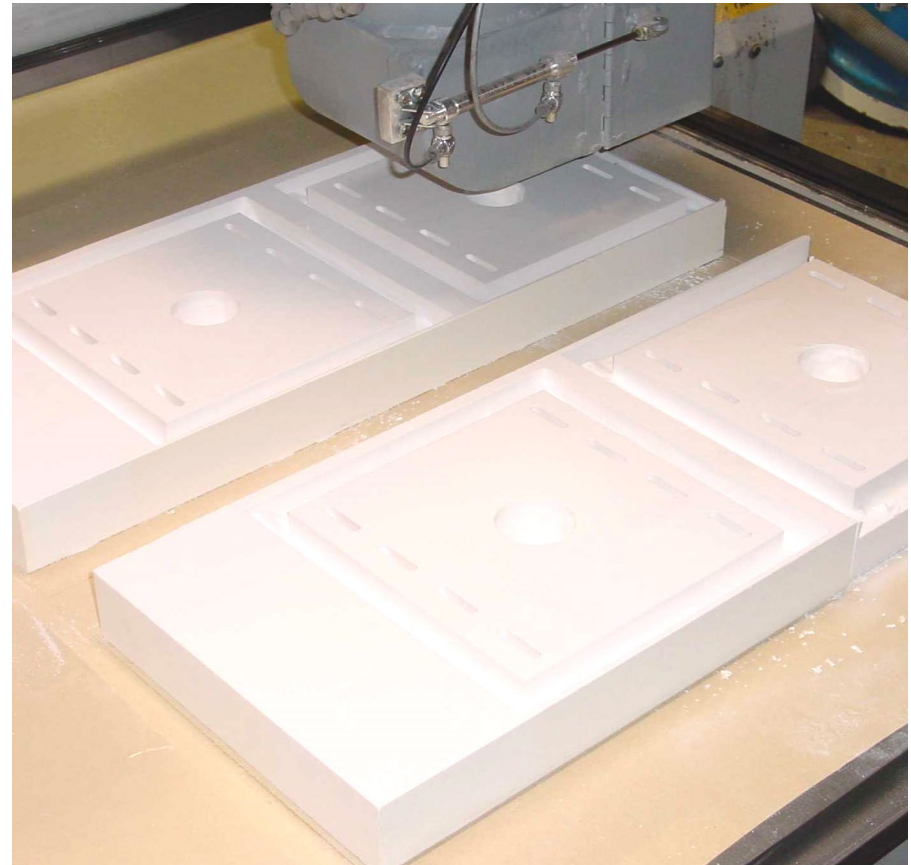


Machinability

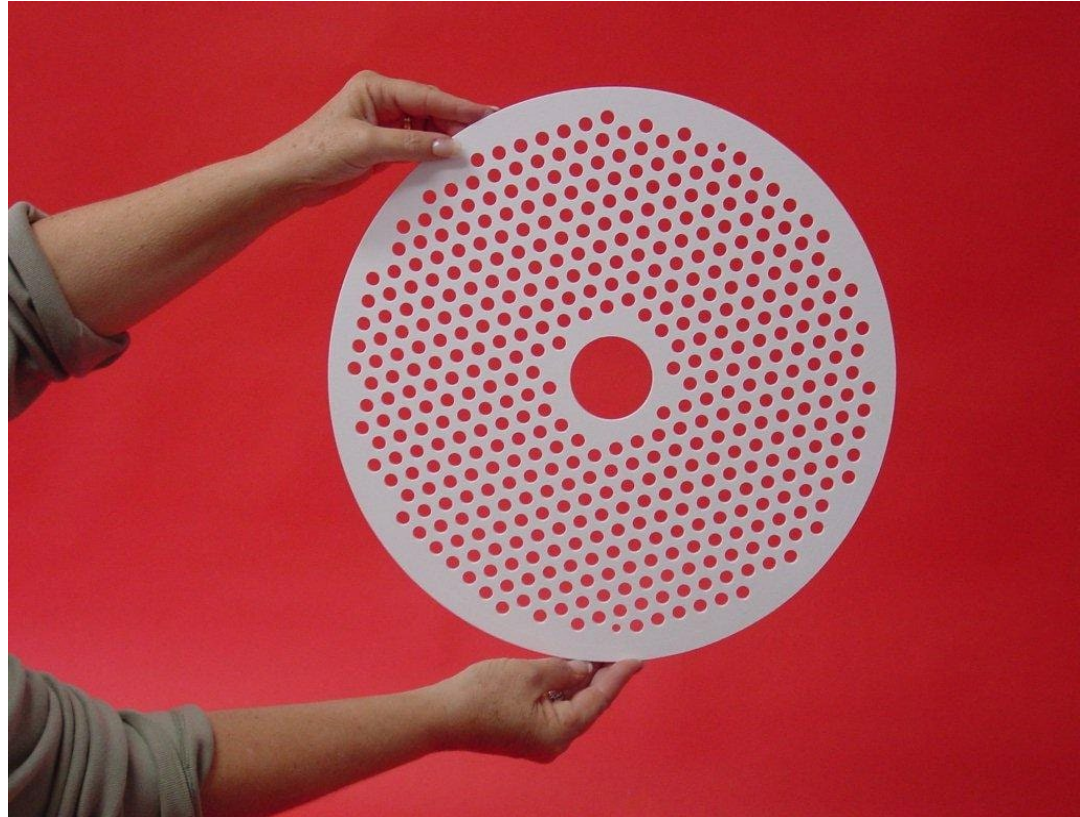
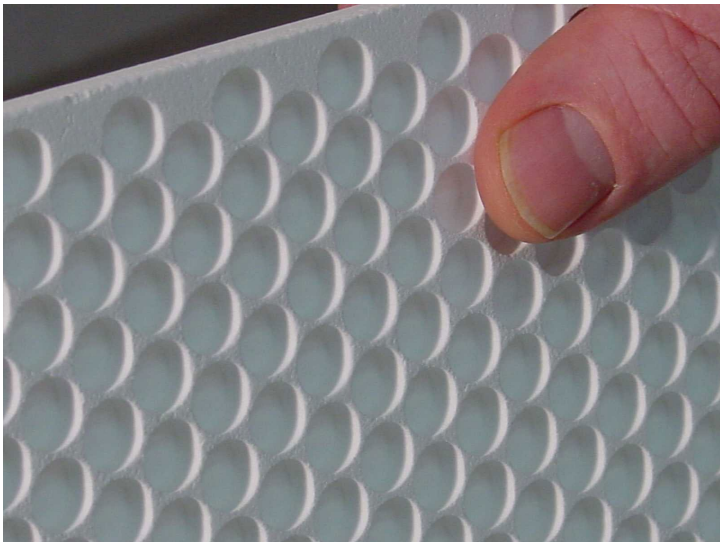
Rapid Prototyping and efficient mass production.

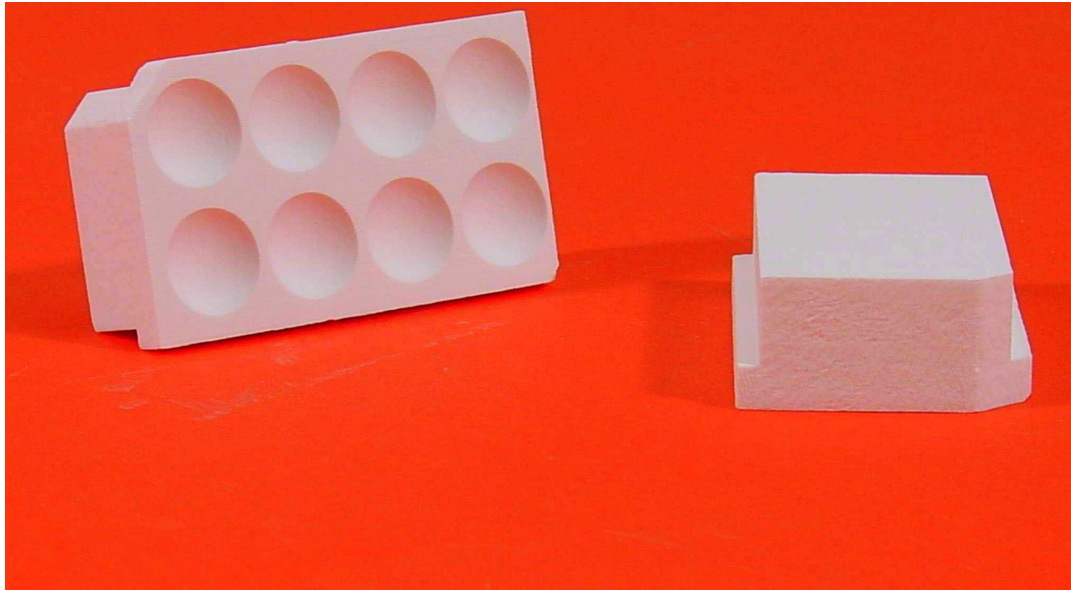
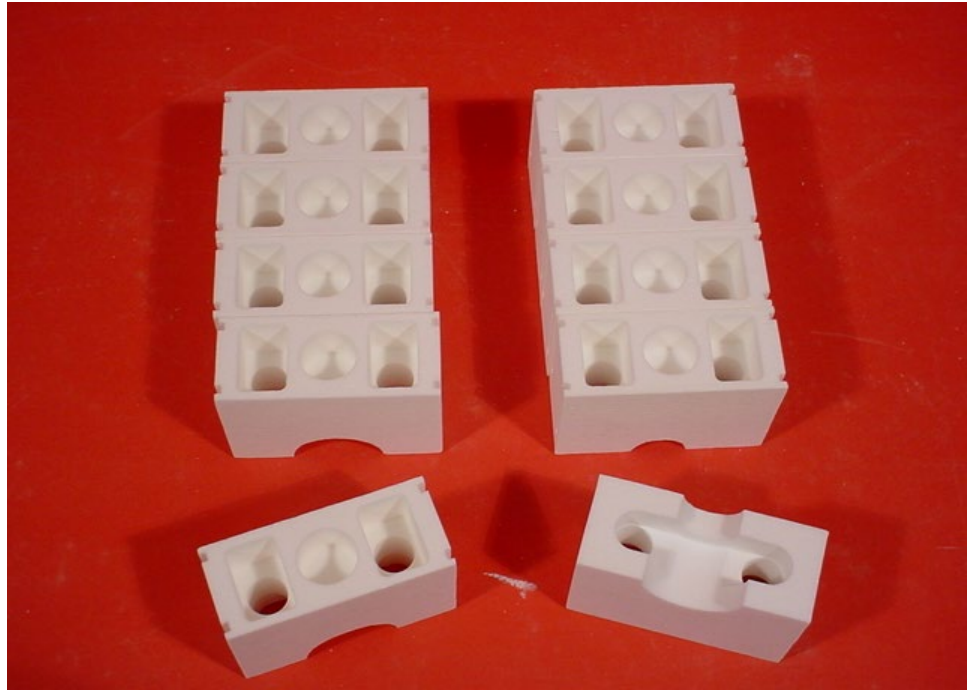
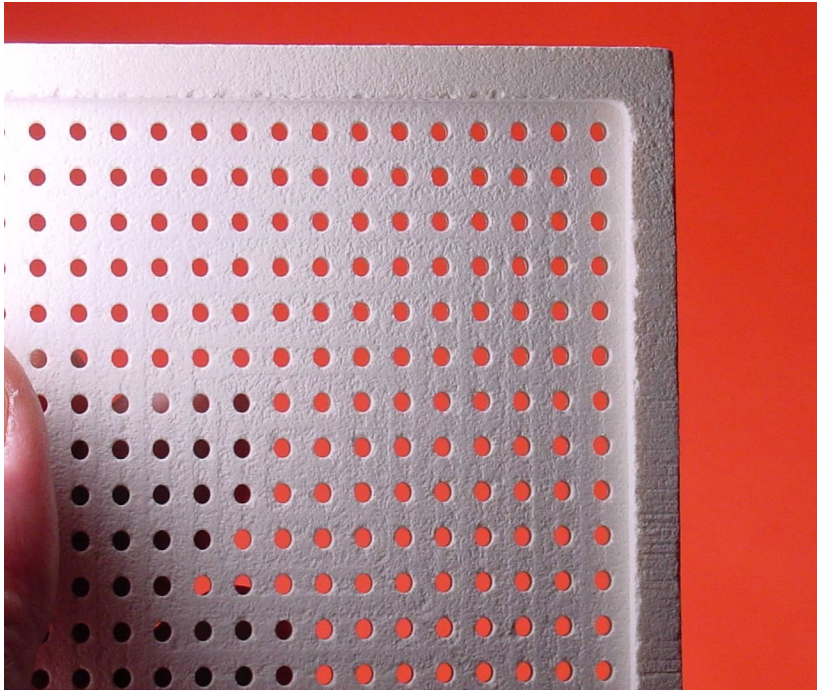
Precision Machined Components

- ZCI owns 4 CNC Routers
- Well-equipped finishing department
- Tightest tolerances in a ceramic fiber product.



Precision Machined Fixtures



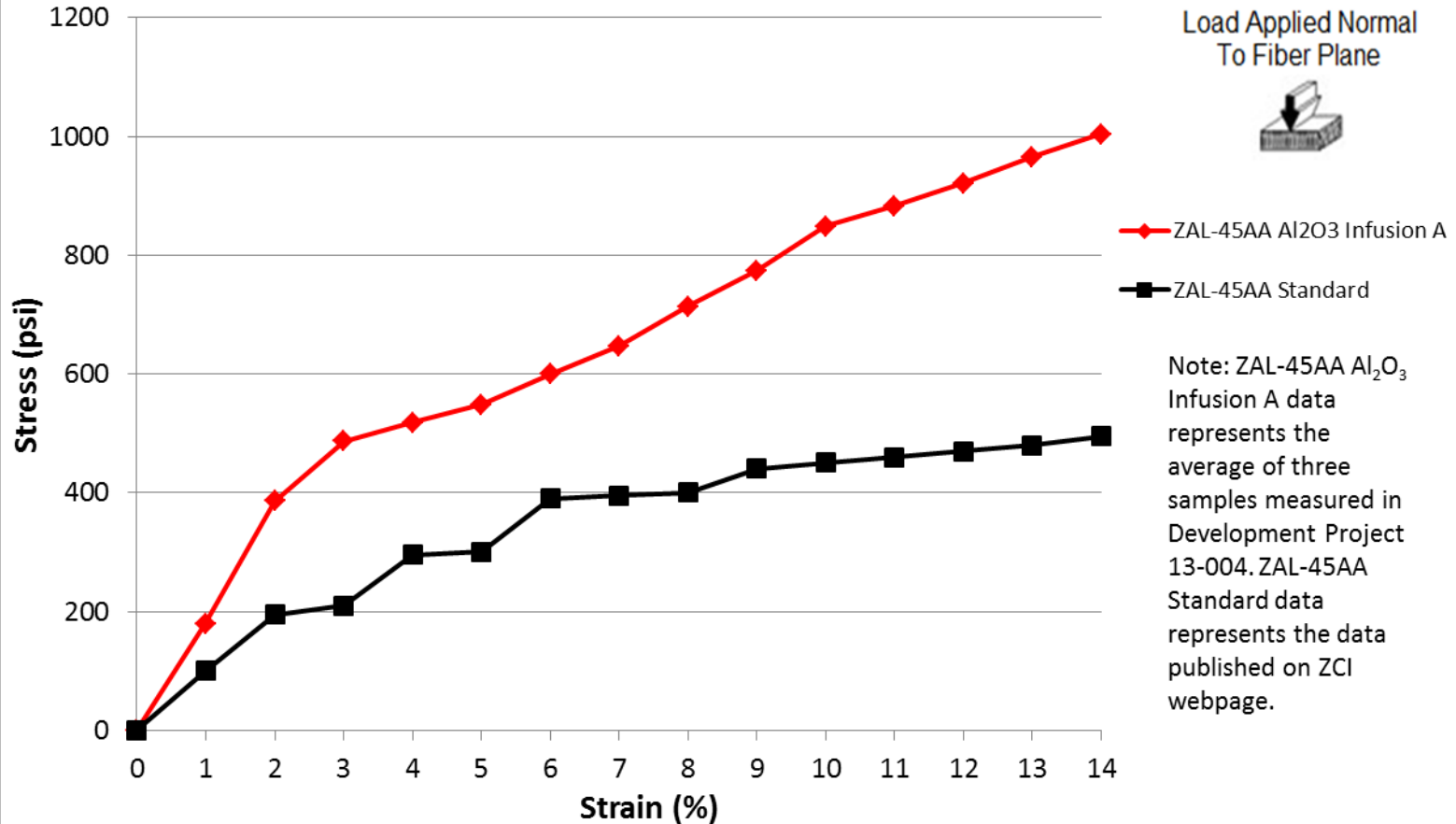


New Developments

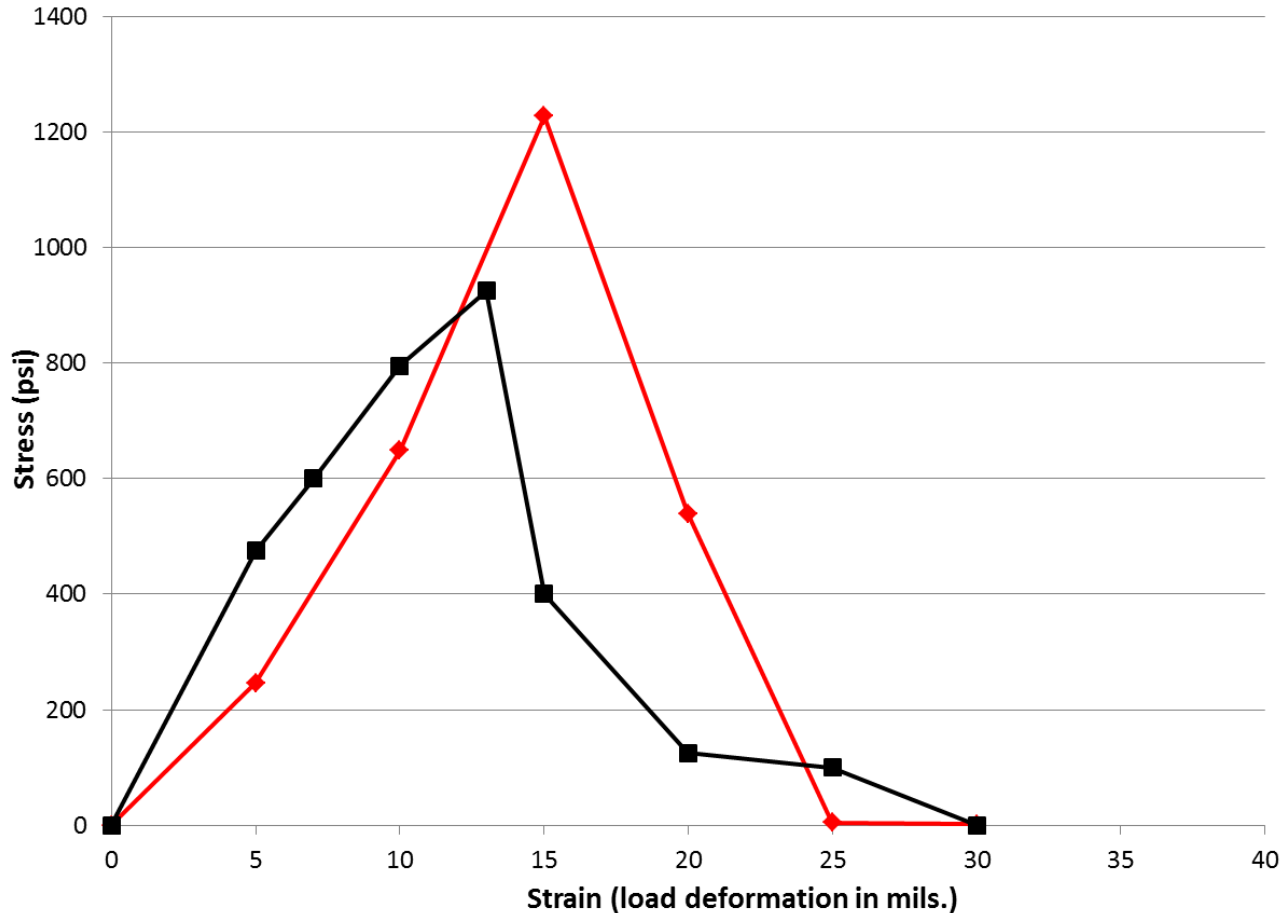
- “Nan ceramic Infusion” – Custom-made fixtures with a proprietary hardening treatment for AA products.
- Increased setter life through enhanced wear resistance.
- More firing cycles.
- Lower cost of ownership in tough fixturing applications.



Compressive Resistance ZAL-45AA with Al₂O₃ Infusion A Vs. Standard ZAL-45AA



Flexural Strength ZAL-45AA with Al₂O₃ Infusion A Vs. Standard ZAL-45AA



Load Applied Normal
To Fiber Plane

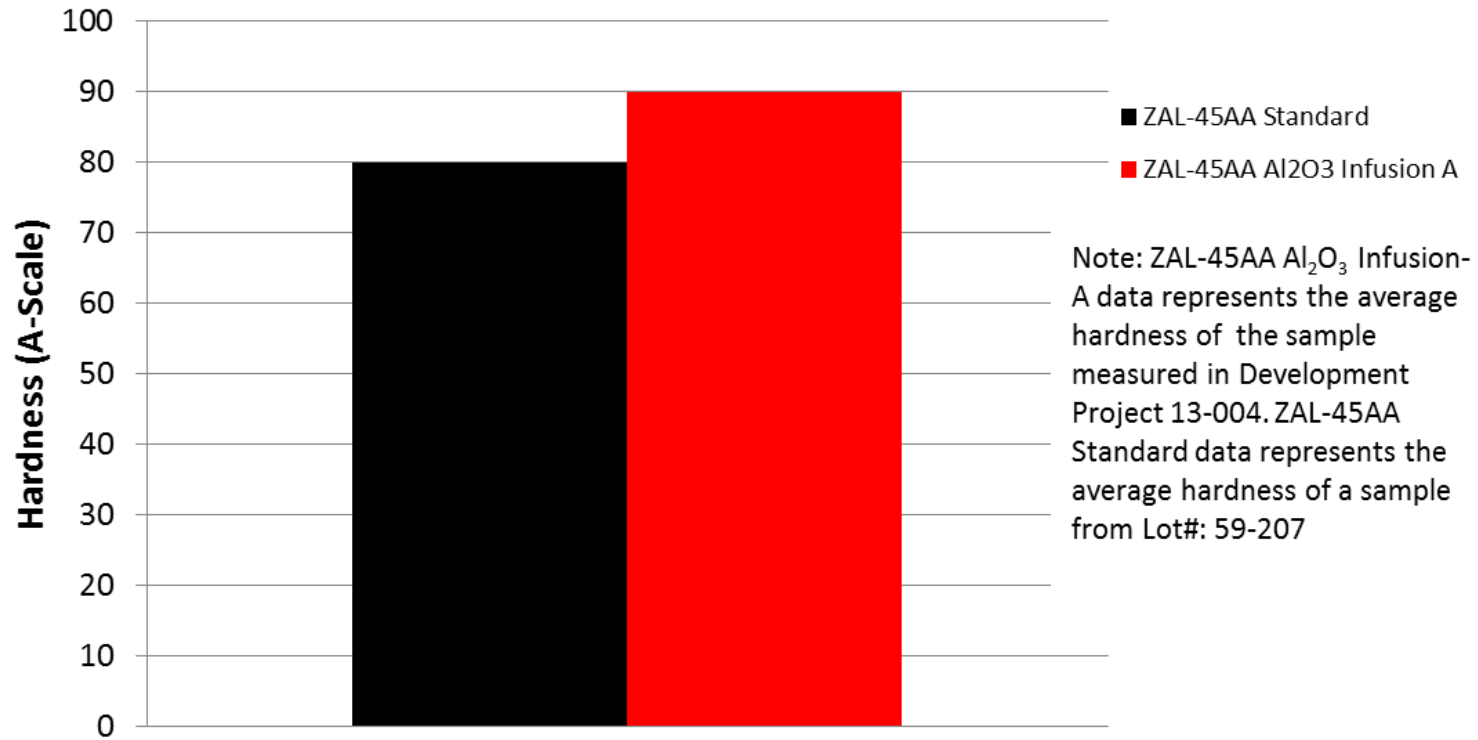


◆ ZAL-45AA Al₂O₃ Infusion A

■ ZAL-45AA Standard

Note: ZAL-45AA Al₂O₃ Infusion A data represents the average of three samples measured in Development Project 13-004. ZAL-45AA Standard data represents the data published on ZCI webpage.

Hardness ZAL-45AA with Al₂O₃ Infusion-A Vs. Standard ZAL-45AA



Low Mass Sintering Fixtures With NANERAMIC INFUSION



**Samples
Available
During
Tabletop
Reception**



Thank You

David P. Hamling
Vice President

dph@zircarceramics.com

Tel: 845-651-6600 ext. 13

www.zircarceramics.com

